

**Stannah**  
The Stairlift People



Take a *fresh*  
look at stairlifts.  
We have.

**Stannah 420 with 'Mallum' upholstery.** Our best-selling chair for straight stairs is generously upholstered for comfort and battery powered for a quiet, smooth ride. The batteries continually recharge, so the chair is always ready for use, even during a power outage. A unique link folds up the footrest when you raise one of the armrests, so there's no awkward bending down.

## Stannah – a name you can trust

Stannah is a family-owned business with over 140 years of experience in the lifting industry and is proud to make the world's best-selling stairlifts. We welcome the opportunity to share that experience with you, either in person or through our network of the best stairlift dealers in North America. A stairlift is an important purchase, so it makes sense to choose Stannah – a name you can trust.

### Better by design

A good product depends partly on using quality materials but far more on the skill of designers and engineers. Stannah has a worldwide reputation for producing the best thought-out stairlifts; attractive, easy to use and reliable, with appropriate safety features included as standard.

Examples include the rail (a tube which is very strong for its small size and shaped so that objects dropped onto it fall harmlessly aside), and our footrests, which can be folded up without bending down – especially important at the top of the stairs.

All of our stairlifts use a reliable battery system with a smart trickle-charger that plugs into a standard power outlet. Not only does this use very little electricity, it is also quiet, gives a smoother ride and will allow you to use your stairlift in the event of a power outage.

### Safety

We believe that safety is the most important factor when making a stairlift. That's why we include more standard safety features than any other stairlift manufacturer and insist on high standards of work when we are training installers. In addition, every stairlift we design is tested for the equivalent of ten years of use and the motor is tested for 100,000 journeys (which is about 20 years of normal residential use) to ensure that it is reliable enough to meet your needs.

However, the stairlift is only part of the story when it comes to safety. Just as important are the needs of the user and the staircase in question. That's why it is so important to have an expert come and review your situation before buying a stairlift.

To arrange for a FREE no-obligation stair survey and a written quotation, call the number shown on the back of this brochure.



*The Stannah 260 is ideal for narrow stairs with tight turns.*

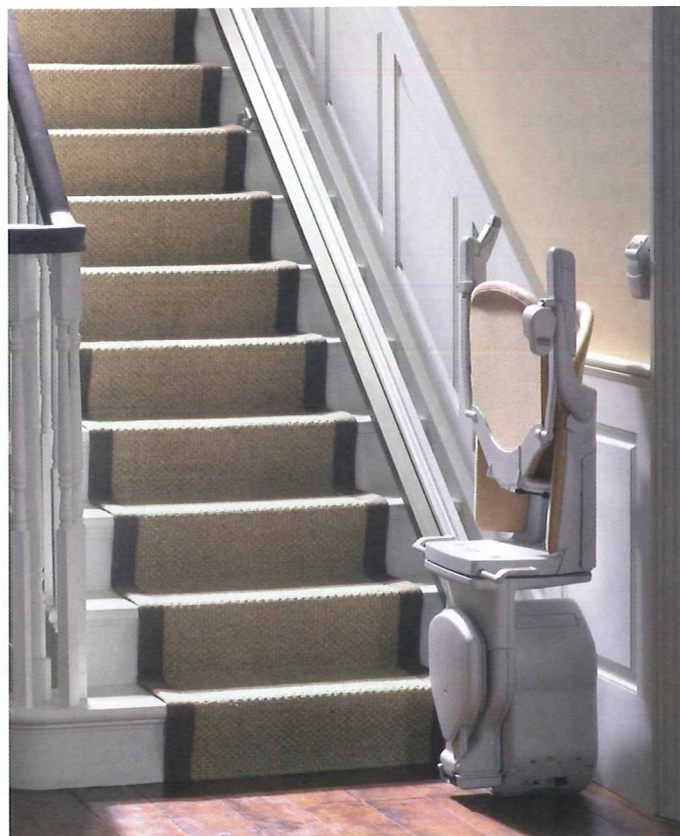


*Stannah stairlifts sit close to the wall and fold up neatly to allow others to walk past easily.*



*Your stairlift will stop immediately if the sensors touch an obstruction.*





Your Stannah can be folded against the wall when it is not in use, giving you more space.



You can unfold your Stannah without bending down. The Solus and Sofia chairs completely unfold in one easy step.



Gentle, constant pressure is all it takes to make your stairlift glide smoothly up or down stairs.



At the top of the stairs, rotate the chair to face the landing, so that you can get off safely.



Once seated, simply press the control to start moving smoothly up or down the stairs. An easy-to-use seat-belt is provided for security.



When not in use, you can leave your stairlift swivelled to act as a barrier.



Using the remote controls you can call or send your Stannah - perfect for carrying laundry upstairs, or supplies down to the basement.



# Stairlifts for straight stairs...

**Comfortable chair**  
We offer a choice of seat styles.

**Easy controls**  
Gently move the control to operate your stairlift. The chair also has a key lock.

**Easy folding**  
Our indoor straight stairlifts can be folded without bending down, for comfort and safety.

**Swivel seat**  
Turns to face the landing at the top of the stairs, becoming a safety-barrier behind you.

**Safety edges**  
Sensors in the base automatically detect obstructions on your stairs and bring the chair to a prompt and gentle stop.



Model shown: Solus chair with Oyster upholstery

**Elegant upholstery**  
Choose from hard-wearing woven, leather or vinyl in a choice of colors.

**Adjustable arms**  
Both armrests can be adjusted to suit you.

**Seat belt**  
For added reassurance. On the Solus and Sofia chairs you can fasten and unfasten the retractable seat belt with one hand.

**Removable link bars**  
For side access.

**Adjustable seat height**  
Set at the time of installation, for your comfort. (Straight stairlifts only.)

**Automatic hinged rail**  
If the stairlift track obstructs the lower landing, this option allows it to automatically fold up out of the way.

**Outdoor model**  
The Stannah 320 withstands harsh weather, salt spray and small animals, and can be locked to prevent unauthorized use. A strong cover provides extra protection when not in use.



## Our chairs for straight stairs



# ...and for stairs that turn

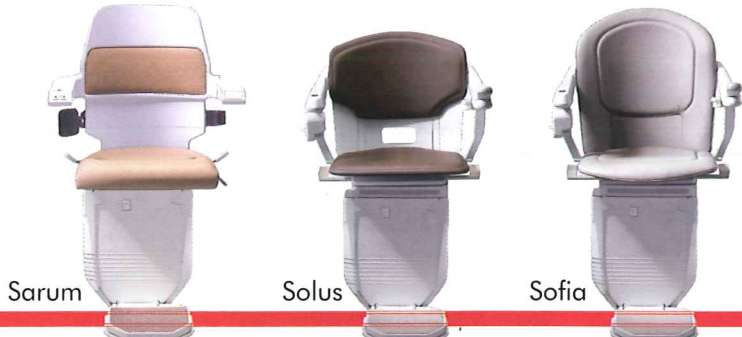
A Stannah 260 is the best solution for stairs that turn. This versatile stairlift is able to fit onto almost any staircase, including the steep narrow stairs often found in older homes, spiral stairs, and split-levels. Off-stair parking (such as shown below) leaves the maximum amount of clear space on the stairs.



## Closely fitting every curve and contour

We build these stairlifts specifically for each situation, with a custom-made rail that hugs the shape of your stairs. This precision fit, along with the slim profile of the rail, helps in another way - saving space on your stairs so that others can use them safely and easily.

What's more, we've designed the rail with two sturdy tubes to make it reassuringly strong. And you can choose your rail in one of six colors to harmonize with your home. The standard color is Pearl (shown in the photos on this page); we also have a striking Jet Black, cool Window gray, two shades of brown, and classic Beige.



Model shown: Sarum chair with Clova vinyl upholstery

## Our chairs for stairs that turn



## Upholstery Colors - Solus & Sofia chairs

Leather - made from the finest quality Scottish leather



Black



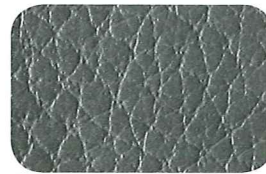
Cream



Cocoa



Oyster



Slate

Woven upholstery - made from a stain-repellent wool blend fabric



Red



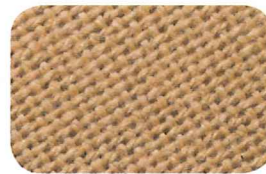
Blue



Green

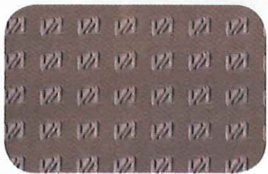


Stone

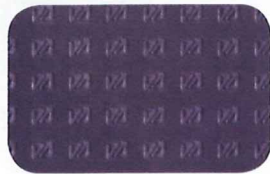


Mustard

Vinyl - lightly textured and easy to keep clean



Sand



Lavender

## Upholstery Colors - Saxon and Sarum chairs

Vinyl - lightly textured and easy to keep clean



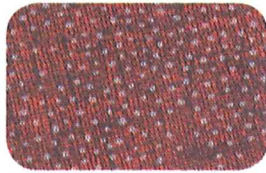
Mallum



Skye



Forest



Roeburn



Clova

### Stannah supplier.

Call for a free no-obligation survey of your stairs.



Handel & Son  
Elevator/Lift Company  
800-506-LIFT (5438)  
[www.ohiolifts.com](http://www.ohiolifts.com)

Our company policy is one of continuing product improvement. We therefore reserve the right to alter specifications and improve design at any time. Stannah is a registered trademark. Colors may vary due to normal printing processes.

©Stannah Stairlifts Inc 2010. Not to be reproduced wholly or in part without the written permission of Stannah Stairlifts inc.

# Stannah

### Stannah Stairlifts Inc.

Head office & showroom:  
20 Liberty Way, Suite A  
Franklin MA 02038  
Toll-free 1-800-877-8247  
Tel 1-508-520-7878  
Fax 1-508-520-7883

New York showroom:  
45 Knollwood Rd., Suite 103  
Elmsford, NY 10523  
Toll-free 1-888-333-8708  
Tel 1-914-345-8484  
Fax 1-914-345-8488

[www.StannahStairlifts.com](http://www.StannahStairlifts.com)